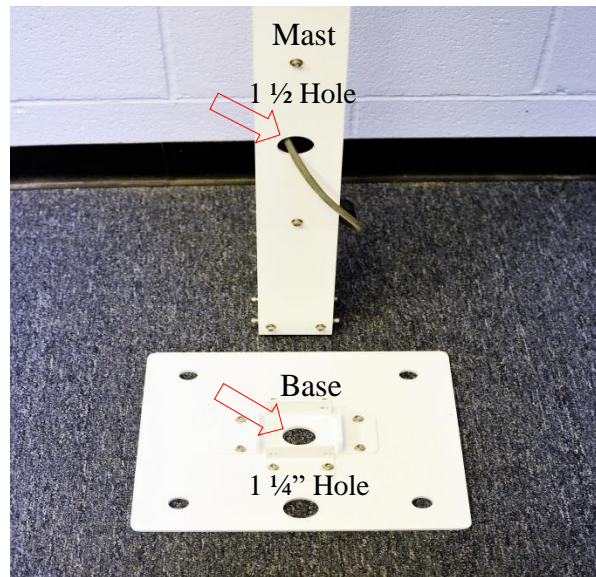
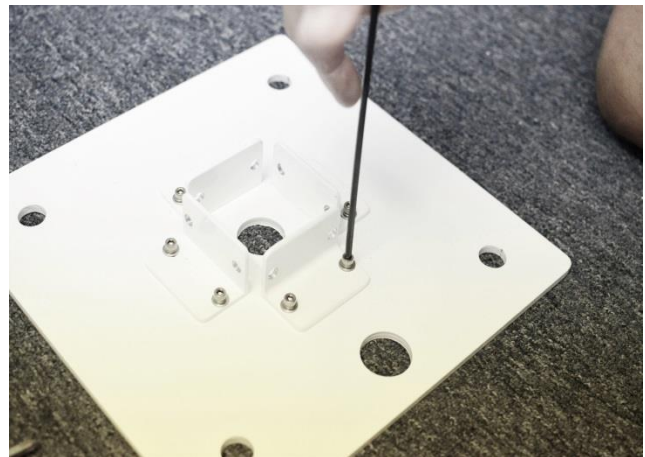
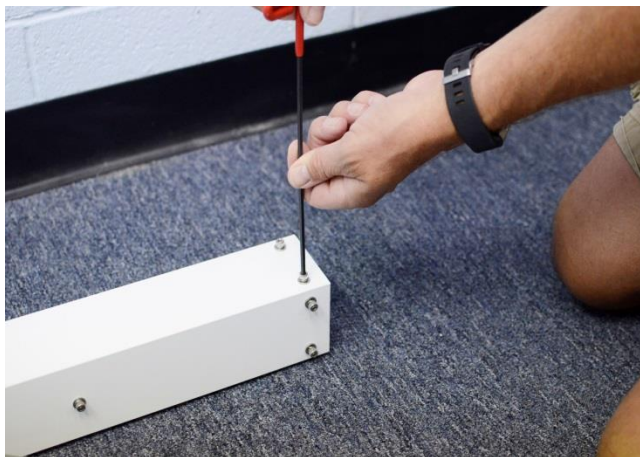


Complete Weather Station Assembly Instructions

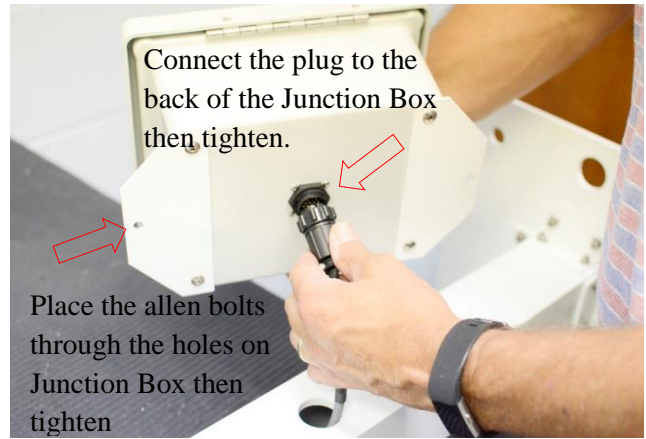
- The 1½" hole on the Mast of the Weather Station is the front.



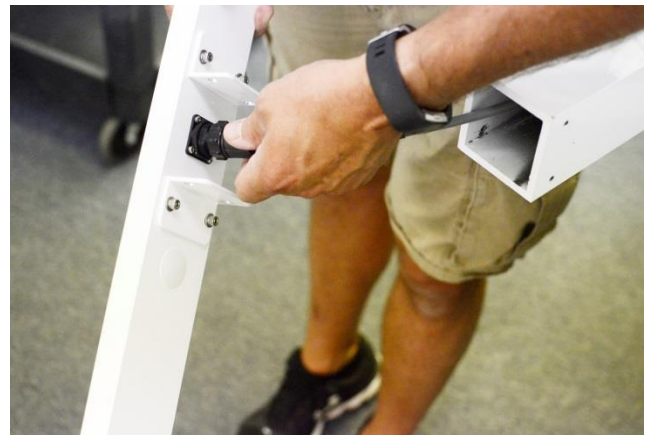
- 1¼" hole on the Base should line up with the 1½" hole on the Mast.
- Remove all (8) allen bolts at the bottom of the Mast.



- Loosen (**do not remove**) all (8) allen screws on the base.
- Place the base at the bottom of the Mast, align holes then insert allen screws. Tighten all allen bolts.

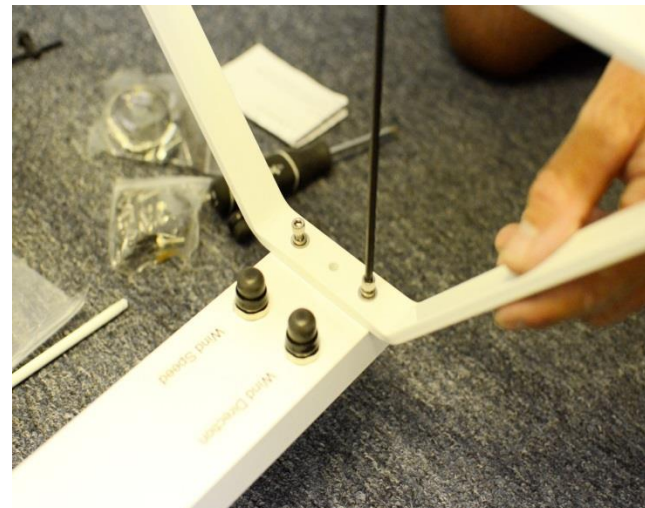


- Remove the (2) allen bolts above and below the 1½" hole. This is the connector that will hook up to the Junction Box



- Hook up the connector coming out the top of the Mast to the connector on the Cross-Arm. Place the Cross-Arm on top of the Mast, align holes then tighten.

- Remove (4) allen bolts from the top of the mast.

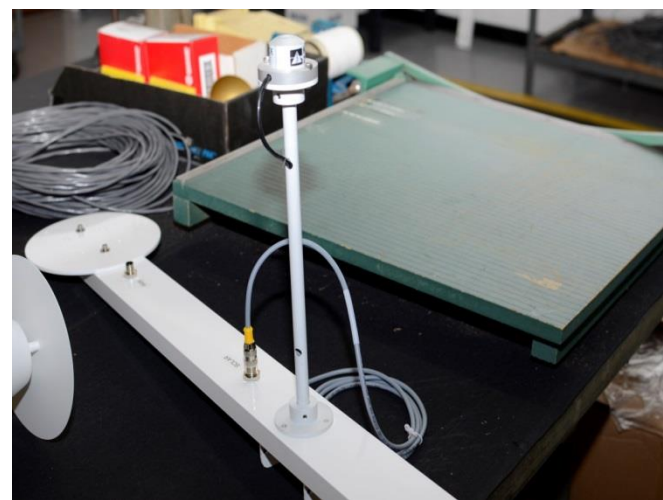


- Remove (2) allen bolts on the end of the cross arm label "Wind Speed/Wind Direction".

- Place the "V-Shape" bracket over the holes, Align and tighten.



- Remove the allen bolts on the bottom of each Wind Sensor (1) each the place them at each end on the “V-Shape” bracket. Connect and tighten allen bolts.



- Remove (2) allen bolts on the front of the Mast to mount the Temperature & Humidity Sensor. Align holes and insert allen bolts. Connect and tighten sensor to Mast.

- Remove (3) allen bolts located in the middle of the Cross-Arm to mount Solar Radiation Sensor. Align holes and insert



- The Rainfall Sensor mounts at the opposite end of the Cross-Arm. To do this it will take (3) allen bolts, (3) #8 flat washers, & (3) Springs. Level the rainfall sensor with the level-bubble located on the inside of the rain can.
- Be sure all allen screws are tight (do not over tighten) and the plugs for each sensor are screwed tightly for a secure connection.